



Meet Isabella, Christina, Kobe & Dominic from KL



We acknowledge and pay our respects to the elders, both past and present who have walked this land before us and now walk alongside us. We honour their totem Biraban the Eagle Hawk and his little brother Wiripaang after which our school is named after.

SOARING HIGH ON THE WINGS OF SUCCESS

Dear Parents, Carers and Community,

I would like to officially welcome our families to the 2019 school year at Wiripaang PS. I trust everyone had a restful break and shared many new memories with family and friends. It has been wonderful to see all of our students return to school happy and with a positive, settled attitude, ready to learn. Our new kindergarten students have also settled exceptionally well into their new routine, commencing their education career at our fabulous school.

Our primary students participated in their swimming carnival yesterday and what a superb day of competition, sportsmanship and fun was had by all. Check out the pics on Facebook!

I have listed on the following page our 2019 class and teacher list for your reference, a slight change in numbers and students in grades affected our previous predictions slightly. I am thrilled to have this amazing, dedicated team of practitioners in front of our students every day. We strive for excellence and will continue to provide only the best learning and opportunities for our children, our future leaders of our community.

Our teacher meet and greet drop in session is being held in week 3, Wednesday 13th February, 3.00—3.30pm. Please come along and meet your child(ren)'s teachers and support staff, check out their quality learning environments and find out all there is to know about the year ahead. Staff will also be asking for your input in setting student academic, social and home goals. The more our families are involved in setting these the more realistic it is for the students to reach them. If this time does not suit your daily commitments there is an option to send back a tear off note and the teacher will be in touch to organise a meeting time that is convenient for all. We

value the partnership between home and school and I encourage all of our families to make that connection early in the year.

I plan to provide a focus snapshot in each newsletter addressing areas of improvement from our 2018-2020 school management plan as our students, staff and infrastructure develop and improve over the course of the year. I will be consistently seeking feedback from you in regards to all of these matters and I appreciate all constructive thoughts and ideas to make our school a better place for our children and community. To that end our hardworking P&C are meeting this Thursday 6-7pm in the library and it would be wonderful to see some new faces as we kick off the year.

Further on in the newsletter you will see a copy of the newly published School Community Charter. The Charter outlines what parents can expect in engaging with their school as a partner in their students learning and provides a framework for establishing positive behaviours and terms of engagement. This sits alongside our Wiripaang PS Solution Steps which we encourage all to access should you have any concerns.

Lastly, I am very much looking forward to our Leadership Induction Assembly that will take place 9.15am Friday 15th February under the COLA. The School Student Leaders, Sport House Leaders, Student Representative Council Members and the Year 6 student body will all take their leadership oath and be badged during this official assembly. Invitations are in the post inviting families and carers to join us on this prestigious occasion and I look forward to seeing you all!

Kind regards,
Emma Stothard

UPCOMING DATES

Term 1—2019

- Thurs 7th Feb—Kindergarten only photos
- Thurs 7th Feb—P&C Meeting Library 6pm
- Sun 10th Feb—Bunnings Belmont BBQ
- Wed 13th Feb—Teacher meet & greet
- Fri 15th Feb—Leadership Induction Assembly 9.15am
- Thurs 21st—Fri 22nd Feb— Zone swimming
- Tues 26th Feb—Paul Harragon cup 7's Rugby League
- Thurs 7th Mar—P&C Meeting Library 6pm
- Wed 20th Mar—U10's Knights Knockout Rugby League
- Thurs 28th Mar—Whole School Photos
- Thurs 4th April—P&C Meeting Library 6pm
- Tues 9th April—Easter Hat Parade
- Fri 12th April—Last day of term 1
- Fri 19th April—Good Friday/Public Holiday
- Mon 22nd April—Easter Monday/Public Holiday
- Thurs 25th April—Anzac Day



Role	2019 Classroom Teacher	Days
Principal	Emma Stothard	Mon- Fri
Deputy Principal/ Instructional Leader	Penny Mcgee Early Action For Success	Mon-Thurs
KL	Elizabeth Ginters	Mon- Fri
1D	Donna Summers – Assistant Principal K-2 Michelle Quigley	Mon - Thurs Fri
1/2S	Salli Gilmour Christine Clifford	Mon - Thurs Fri
2H	Hannah Davies	Mon- Fri
3/4M	Damian McNeil	Mon- Fri
3/4S	Karlie Symons Amanda Lavercombe – Assistant Principal 3-6	Mon - Thurs Fri
5/6T	Peter Thompson	Mon- Fri
5/6P	Deanna Pfeiffer	Mon- Fri
WF (IO/IS class)	Clare Fleming - Assistant Principal Support Unit Eimear Dunn	Mon, Tues, Wed, Fri. Thurs
WS (Multicat class)	Stacey Moffitt	Mon- Fri
WM(IM class)	Noelene Matheson	Mon- Fri
Learning and Support Teacher	Vicki Smart	Mon - Thurs
Teacher Librarian	Eimear Dunne	Mon- Wed
Relief from face to face Teacher	Hayley Reeves	Tues - Wed
Additional Teaching Staff funded from school based allocated funds		
Early stage 1 intervention	Michelle Quigley	Tues-Thurs
Stage 1 intervention	Laura Greive	Tues-Thurs
Stage 2/3 Intervention	Amanda Lavercombe - Assistant Principal 3-6	Mon-Thurs
Assistant Principal Wellbeing	Debra Cook	Tues, Wed.

A complete staff listing will be available in next fortnight's newsletter

School Community Charter

 **Collaborative. Respectful. Communication.**

The following School Community Charter outlines the responsibilities of parents, carers, educators and school staff in NSW public schools to ensure our learning environments are collaborative, supportive and cohesive.

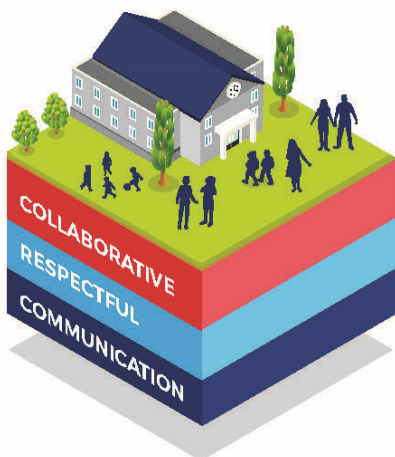
We treat
each other
with
respect

What our schools provide

NSW public schools work to create positive environments for students, staff and the entire school community that support student learning. We strive to ensure that every student is known, valued and cared for.

The best education happens when parents and schools work together.

The School Community Charter aligns with the NSW Department of Education Strategic Plan 2018 – 2022.



Positive environments

It is important that our NSW public schools are positive environments and that parents and carers are kept informed of students' progress and school announcements.

Parents and carers can expect:

- To be welcomed into our schools to work in partnership to promote student learning.
- Communication from school staff will be timely, polite and informative.
- Professional relationships with school staff are based on transparency, honesty and mutual respect.
- To be treated fairly. Tolerance and understanding are promoted as we respect diversity.

We
prioritise
the wellbeing
of all students
and staff

**Unsafe
behaviour**
is not acceptable
in our schools

We work
together
with the
school

Ensuring respectful learning environments for all members of NSW Public Schools communities.



We create
collaborative
learning
environments

We
all play
our part

We work
in partnership
to promote
student
learning

Communicating with our schools

Our staff will find a time to talk to you when they can give you their full attention. Please remember that while our staff are in class or dealing with other matters, they may not be available to answer your questions immediately.

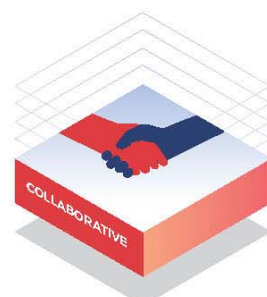
Our schools and communities will make sure that written communication is appropriate, fair and easy to read. We encourage you to use email and social media appropriately to connect with your school and stay up-to-date with up-coming events in the school community.

Our guide for parents, carers and students provides useful information about the complaints process:
education.nsw.gov.au/about-us/rights-and-accountability/complaints-compliments-and-suggestions/guide-for-parents-carers-and-students

Respectful communication is a right

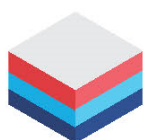
In all workplaces people have the right to feel respected. Unacceptable and offensive behaviour has no place in our school communities.

To ensure the wellbeing of students, staff and the community in our schools, steps will be taken to address unacceptable behaviour. This may include restricting contact with the school community or, in more serious cases, referral to NSW Police.



Unacceptable behaviour may include but is not limited to:

- Aggressive or intimidating actions, such as violence, threatening gestures or physical proximity.
- Aggressive or intimidating language, including the use of obscenities, making sexist, racist or derogatory comments or using a rude tone.
- Treating members of the school community differently due to aspects such as their religion or disability.
- Inappropriate and time wasting communication.



Collaborative.
Respectful.
Communication.

School Community Charter

education.nsw.gov.au

Solution Steps

Wiri says...

When you need help simply call...

Wiri says...



Step 1

- ✓ Please visit your child's class teacher
- ✓ For playground problems see the teacher on duty in an orange vest

Step 2

- ✓ If you have seen your classroom teacher and you feel you need more support please see one of our school executives



Ms Fleming
Special Ed



Mrs Lavercombe
3 - 6



Mrs Summers
K - 2



Mrs Cook
Assistant
Principal
Wellbeing



Ms McGee
Instructional
Leader

Step 3

- ✓ If you have seen school executive and you still need more support then make an appointment to see Mrs Stothard



If your issue is regarding another parent please submit your concern in writing to the school executive. Approaching students or parents about school concerns is not acceptable onsite.

QUESTIONS TO ASK YOUR KIDS AFTER SCHOOL INSTEAD OF “HOW WAS YOUR DAY?”

- What made you smile today?
- Can you tell me an example of kindness you saw/showed?
- What did you do that was creative?
- Who did you sit with at lunch?
- Was anyone in your class gone today?
- Tell me something you know today that you didn't know yesterday.
- Did you like your lunch?
- What was the hardest rule to follow today?
- If you could change one thing about your day, what would it be?
- What made your teacher smile?
- What made her/him frown?
- If you could switch seats with anyone in class, who would it be? And why?
- What kind of person were you today?

Sports news

Swimming Carnival

Well done to Wiripaang students for a fantastic day at our Swimming Carnival last Monday. Students represented Wiripaang with pride, with an excellent level of attendance and participation. It was great to see so many students entering a range of events and earning points for their houses. Awards for event winners, age champions and the winning House will be presented at an upcoming assembly – more information to come. Thanks to all staff and volunteers for their hard work on the day and to the numerous parents and carers who attended to support our swimmers.

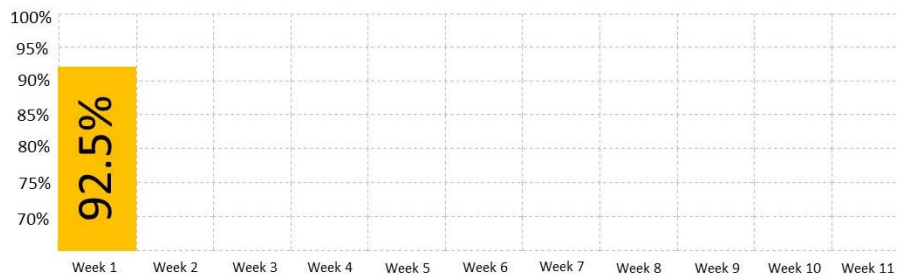
Mr McNeil (Sports Coordinator)



Missing school means missing out!

Term 1 Student Attendance Challenge at Wiri...




School starts at 9.05am, be there and be ready to learn!



We are aiming for a consistent 95% attendance each week. Let's work together to get there!

Learning at home....

A new year can be great inspiration for a new way to engage in learning at home. Readily available board games can be great fun and also develop skills in counting, engineering, spatial awareness, direction and problem solving. Here are just a few examples:

		
Jenga	Connect Four	Snakes and Ladders
Become a structural engineer and begin the basic understanding of forces like loads, tension, compression, torsion and more.	Players need to understand direction, pattern, sequencing and prediction.	Counting with one-to-one matching, counting forwards, direction, chance, recognising dot patterns on dice

Best of all, these games are fun and they teach resilience and how to win with humility. Enjoy!

Canteen news

Wiripaang Public School Menu - Term 1

<i>HOT FOOD</i>	<i>PRICE</i>
Ham & Cheese Toasted Sandwich	\$ 2.50
Ham, Cheese and Tomato Toasted Sandwich	\$ 3.00
Chicken Tender, Cheese and Sauce Toastie Wrap	\$ 3.00
Mini Pizza - Ham & Cheese	\$ 2.50
Cocktail Fish	\$ 0.50
Chicken Nuggets	\$ 0.50
Chicken Goujons	\$ 0.50
Lean Small Pie	\$ 2.00
Lean Sausage Roll	\$ 2.00
Lean Large Pie	\$ 3.00
Lasagne	\$ 4.00
Chicken Tender	\$ 1.50
Chicken Burger, Lettuce/Mayo - Wednesday	\$ 4.00
Hot Dogs - Friday Only	\$ 3.00

<i>SNACKS</i>	<i>PRICE</i>
Salada Biscuit - Cheese/Tomato	\$ 1.00
Salada Biscuit - Vegemite	\$ 1.50
Low fat Chocolate Muffin	\$ 1.50
Low Fat Blueberry Muffin	\$ 1.50
Honimus with Veg Stick	\$ 0.50
Custard	\$ 0.50
Banana & Custard	\$ 0.80
Slinky Apple	\$ 1.00
Piece of Seasonal Fruit	\$ 1.00
Plain Popcorn	\$ 1.40
Red Rock Honey Soy Chips	\$ 1.40
Red Rock Plain Chips	\$ 1.40
Grain waves	\$ 1.40
Chicken JJs	\$ 1.40
Cheese Cube	\$ 0.40
Pikelets	\$ 0.50

<i>FROZEN TREATS</i>	<i>PRICE</i>
Fruit Cups	\$ 1.00
Juicy Tubes - Orange	\$ 1.00
Juicy Tubes - Wildberry	\$ 1.00
Juicy Tubes - Tropical	\$ 1.00
Moosies - Chocolate	\$ 1.50
Moosies - Banana	\$ 1.50
Moosies - Bubblegum	\$ 1.50
Moosies - Strawberry	\$ 1.50

<i>EXTRAS</i>	<i>PRICE</i>
Cheese	\$ 0.50
Avocado	\$ 0.50
Cucumber	\$ 0.50
Ham	\$ 0.50
Chicken	\$ 0.50
Beetroot	\$ 0.50
Olives	\$ 0.50
Feta Cheese	\$ 0.50
Tomato	\$ 0.50
Lettuce	\$ 0.30
Carrot	\$ 0.30
Mayonnaise	\$ 0.30
Onion	\$ 0.30
Salad Dressing	\$ 0.30

<i>DRINKS</i>	<i>PRICE</i>
Water 600ml	\$ 1.50
Water 350ml	\$ 1.00
Popper - Apple & Black Current 250ml	\$ 2.00
Popper - Apple 250ml	\$ 2.00
Popper - Tropical 250ml	\$ 2.00
Strawberry Milk 200ml	\$ 1.50
Chocolate Milk 200ml	\$ 1.50
Up & Go Chocolate 250ml	\$ 2.00
Chill J - Groovy Grape 200ml 100% sparkling Juice	\$ 2.00
Chill J - Blastin Black Current 200ml	\$ 2.00
Chill J - Chillin Cola 200ml	\$ 2.00
Milio Warm/Cold	\$ 1.00

<i>SANDWICHES, WRAPS & SALADS</i>	<i>PRICE</i>
Low Fat Cheese Sandwich	\$ 1.50
Lean Chicken Sandwich	\$ 2.00
Ham Sandwich	\$ 2.00
Salad Sandwich - Cucumber, Tomato, Lettuce, Carrot	\$ 3.00
Large Salad Sandwich with meat and extras	\$ 5.00
Egg & Lettuce Sandwich	\$ 2.50
Tuna or Pink Salmon Sandwich	\$ 2.50
Vegemite Sandwich	\$ 1.50
School Salad - Lettuce, Tomato, Cucumber, Carrot, Cheese	\$ 2.50
Salad Box - Lettuce, Tomato, Cucumber, Carrot, Capsicum,	\$ 4.00
Bento Box -Popcorn,cheese, fruit, vegemite slwch, Carrot sticks with Honimus or Hlmade corn relish dip	\$ 6.00

Community Announcements

BELMONT
BASEBALL CLUB

**TRY BASEBALL
& TEEBALL**
& JUNIOR REGISTRATION DAYS

SUNDAY 10 FEBRUARY 9AM - 10.30AM
FRIDAY 15 FEBRUARY 5.30 - 7PM
WEDNESDAY 20 FEBRUARY 5PM - 6.30PM

MILLER FIELD - BELMONT

NEW & EXISTING
PLAYERS
BRING A
FRIEND

PLAYERS AGED
5-15 YEARS

WWW.BELMONTBASEBALL.COM.AU



**WELCOME TO
FAIR PLAY OOSH
GATESHEAD.**

Meet our friendly staff



TRY RUGBY

Come and try the great
game of Rugby

Southern Beaches Junior Rugby
are organising free sessions
February 2019

When: Fridays 5pm to 6pm



1st & 8th February
CHAPMAN OVAL
16 Pelican Street, Swansea

15th & 22nd February
ERNIE CALLAND OVAL
1A Willow Road, Gateshead

For insurance purposes all participants
must register. To do so please
complete the Jotform at
<https://form.jotform.co/83352762515862>



- ✓ Internationally Experienced Teachers
- ✓ Working With Children Checks
- ✓ Unique dance programmes
- ✓ Professional quality tuition
- ✓ 6 convenient locations

Life is BETTER when you DANCE!



FREE Info Pack!
Ph: (02)4959 5754

Use
\$100
vouchers!



VALENTINE
CHARLESTOWN

EDGEWORTH
WARNERS BAY

TORONTO
SPEERS POINT

www.breakawaydancers.com.au



MINIMBAH LOCAL AECG



(Aboriginal Education Consultative Group)

Parents & Community members are encouraged to come along.

The AECG is an Aboriginal community-based organisation made up of volunteer members. Your Local AECG is your link to supporting Aboriginal Education outcomes.

All people involved or interested in Aboriginal Education are encouraged to be members of their Local AECG.
This will contribute to improving outcomes for our students.

To provide opportunities for Aboriginal people to be actively involved in all decision-making that is relevant to education and training through a collaborative consultative process
We strive to empower our communities to become involved in lifelong learning.

Next general meeting is on Tuesday 27th February
6pm at Awabakal Environment and Education Centre, Dudley

For further information
Please call

Roselea Newburn
President
Minimbah Local AECG
Phone: 0402317820
Email: minimbahlaecg@gmail.com

ATUKA NETBALL CLUB



Atuka Netball Club Registration Days
The first 30 players to pay & register will receive one of our new uniforms.
Don't forget you can use your 2019 Active Kids VOUCHER.

Atuka Netball Courts, South Street Windale
Saturday 19th January 2019 5pm to 8pm
Sunday 27th January 2019 5pm to 8pm
Saturday 9th February 2019 5pm to 8pm
Saturday 23rd February 2019 5pm to 8pm

**For more information contact Tammy on 0448806926
or atuka@live.com.au or find us on Facebook.**